

Network Management Lecture Basics of Network Mangement

Hashim Safdar

2

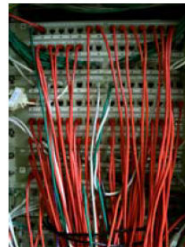
Racks and Panels

▷ Racks

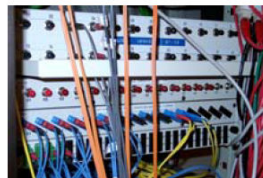


How to handle this "chaos" to that the users can access their IT services at the expected/affordable quality level?

▷ TP panel

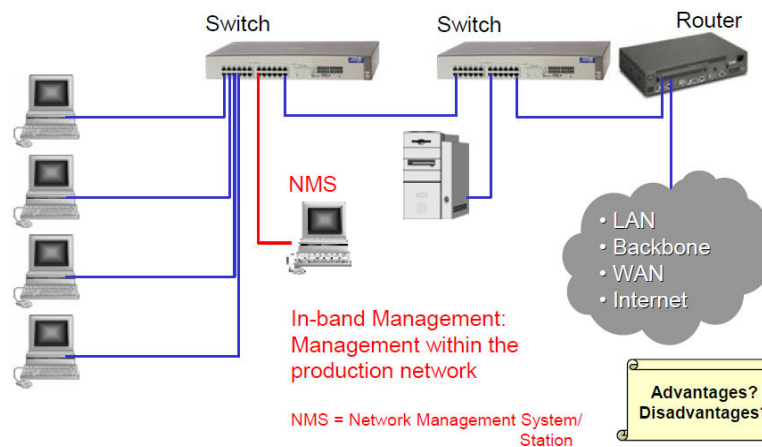


▷ Optical panel



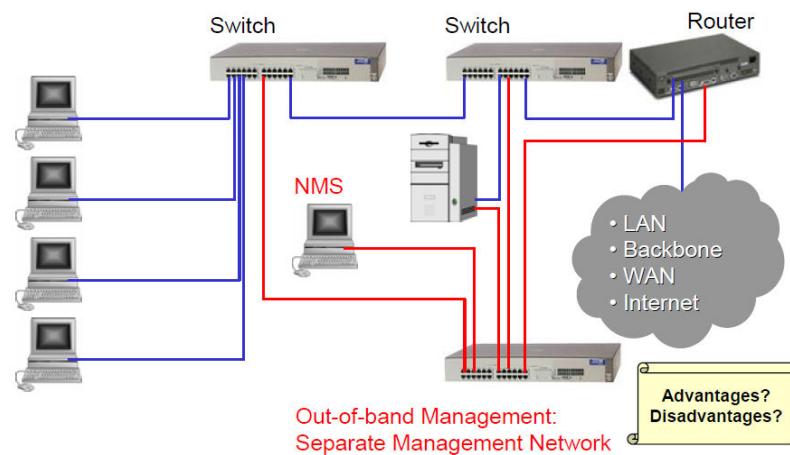
3

Typical LAN/Intranet Management



4

Alternative LAN/Intranet Management



5

Switches: From the Edge to the Core

▷ 8-port switches



▷ Some 24-port switches

- SNMP/RMON management
- Cisco 2924 with optional slots (e.g. for optical interfaces) and 3.2 Gbps backplane capacity



▷ 48-port switch

- Cisco 2948; optical uplink

▷ 12-port Giga switch

- Cisco 4912; optical interfaces



▷ "Switchrouter"

- Cisco 6500
- modular
- routing function
- optical



6

Routers: From the Edge to the Core

▷ Access router

- Cisco 1605
- 2 Ethernet ports
-



▷ Access router, older series

- Cisco 2514
- 2 Ethernet and 2 serial ports
-
- New series: 2600 (modular)



▷ Large access/small core router

- Cisco 3620 (2 slots, modular)
- (incl. 1 module à 4x10 Mbps)



▷ "Switchrouter" (core)

- Cisco 6500
- modular
- Gbit ports
-
- memory flash card



7

Internet Addressing

- Why is this so important?
- Components
 - Network
 - Subnetwork
 - Host
- The role of the netmask

8

Homework

- A company got a C network (198.76.54) assigned and wants to
- divide the network into sub networks for 50 computers each.
 - How many of those subnets can be established?
 - How many usable addresses does each subnet have?
 - Which netmask do they have to use?
 - Which are the usable addresses per subnet?